

Wedgle® Direct-Inject™ TREE INJECTION SYSTEM



Treat almost any tree in 5 minutes or less!

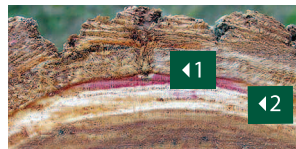
Delivers proven results with less chemicals compared to foliage spray or soil drenching

- No guarding
- No return trips
- No mixing, spilling or spraying
- No waiting for uptake
- No drilling
- No drilling damage

The rugged high-impact-plastic carrying case is included at no extra charge with every Wedgle® Direct-Inject™ System purchase. The all-in-one case with custom foam inserts holds the injection unit, all tools, and up to four 120 ml chemical packs.

Don't Drill... Direct Inject!

Direct-Inject protects trees... Drilling damages trees...



1. Wedgle Direct-Inject System makes injections through the bark without drilling and without damaging sapwood.

2. Chemical is injected into the cambial zone where the tree can easily use it. (dyed red for visibility)



3. Injections requiring drilling damage the sapwood, disrupt nutrient movement, and cause permanent damage.

4. Drilled holes allow pest and fungus entry.



SPIRAL WHITEFLIES TREATED

Conifers, palms, and some hardwoods may be injected using **Portle or Palm Tips** and the **Tip Setter**.

With an easy sliding action, the **Tip Setter** drives these heavier tips deep into the active areas of conifers and palms, or through the tough outer bark of some hardwoods.



DIPLODIA TIP BLIGHT TREATED

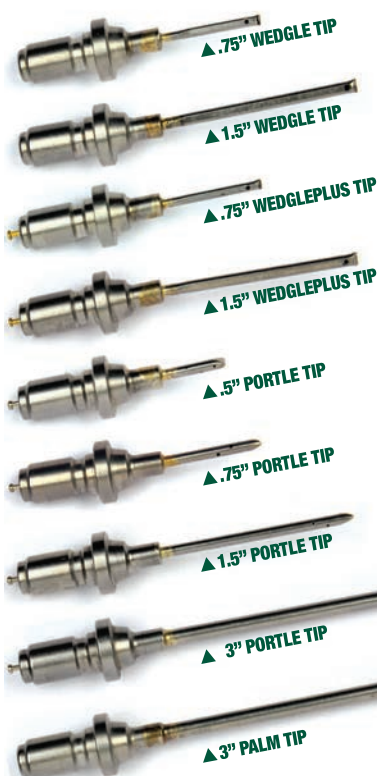
Treat hundreds of trees non-stop.

Make up to 1,000 injections without reloading chemical with the **High-Volume Kit**. Simply attach the transfer line to the 1000 ml chemical pack and the Direct-Inject unit. Heavy-duty nylon backpack has padded shoulder straps and carrying handle.



Contact your distributor for details. • 800.698.4641 • ArborSystems.com

QUICK-CONNECT™ INJECTION TIPS



Original Wedgle® Tips

Ideal for most hardwoods, the Wedgle Tip features a patented wedge-shaped end which delivers chemical precisely to a tree's cambial zone, the space between the bark and the outer ring of sapwood. Used with self-sealing WedgeCheks™ which keep chemical in the tree when tip is withdrawn.

Wedgle Plus™ Tips

Same tip design, plus a check valve in the hub. Ideal when a larger quantity of chemical is being injected. Check valve lets you remove the injection unit from the tip so you can make other injections while letting the tree absorb chemical.

Portle® Tips

Ideal for injecting conifers, the Portle Tip has openings, or ports, along the length of the tip which inject chemical at multiple locations. A check valve in the hub of the tip keeps chemical in the tree while all injections are being made. Portle Tips are also useful for injecting difficult-to-treat hardwoods or when making late-season injections when most trees are harder to penetrate.

Palm Tips

The Palm Tip is a longer, heavier tip designed to penetrate a palm's outer husk and deliver chemical deep into the inner active layers.

AS-Equipment 082012

Wedgle® Direct-Inject™ TREE INJECTION SYSTEM

INCREASE TREATMENT EFFECTIVENESS

The Direct-Inject process injects chemicals directly into the active zone delivering faster results.

TREAT ALMOST ANY TREE IN FIVE MINUTES OR LESS

There is no waiting for uptake, no guarding, and no return trips. More trees treated in less time.

PREVENT DRILLING DAMAGE

Direct-Inject is the only trunk injection method that does not require drilling, preventing drilling damage, long-term wounding, and wasted tree energy.

SIMPLIFY THE TREE-CARE PROCESS

The Direct-Inject System requires no power, no drills, and no pumps. Everything is included in one carrying case.



Quick-Connect Chemical Packs

Change chemical packs in a snap

120 ml chemical packs

Chemical packs snap on to injection unit top QC coupler. No mixing. Air-free packs are easy to prime, empty completely, and work at any angle.

1000 ml chemical packs

Used with the High-Volume Kit. Same QC coupling systems as the 120 ml chemical pack. Not all chemicals are available in 1000 ml packs; ask your distributor for details.

Insecticides • Fungicides • PGRs • MicroNutrients



- Control beetles, caterpillars, mites and nematodes (prevents Pine Wilt disease) using Greyhound™ Insecticide



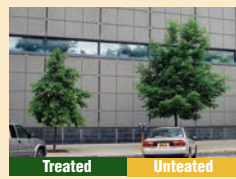
- Treat for Emerald Ash Borer, Hemlock Woolly Adelgids, Whiteflies, aphids and beetles using Pointer® Insecticide



- Prevents Anthracnose in Sycamore, Diplodia Tip Blight, Dutch Elm disease, Crabapple Leaf disease and Oak Wilt disease using Shepherd® Fungicide



- Effective control of Phytophthora spp. and Pythium diseases, Sudden Oak Death and Beech Decline using Whippet® Fungicide



- Reduces tree growth up to 70% over three years including stem elongation and wood formation. using Mastiff® PGR



- Relieves symptoms of iron chlorosis, manganese deficiency and drought and transplant stress using Nutriboosters®